

HIGH EFFICIENCY RECESSED LED LUMINAIRE

CYFELCO REC-PNL-32W-5490LM-4000K-L60W60H75

PRODUCT DATA



820-301



General Information

Order Code	820-301
Product Description	CYFELCO REC-PNL-32W-5490LM-4000K-L60W60H75
Application	Offices, shops, educational and public centres, etc.
Installation	Ceiling type exposed T-bar, plasterboard with accessories 590-001
Luminaire type	Recessed LED Luminaire
Light Source	LED modules SMD Vossloh-Schwabe
Number of light sources	2 pcs
Light Source Colour	4000K, cool white
Driver	Built-in Vossloh-Schwabe 186444
Dimming	Not Dimmable
Energy Class	A++
Optical Risk	RG 0
Protection class	Class I
Ingress protection code	IP 20 [Finger-protected]
Mechanical impact protection code	IK03
Standards	2014/30/EU Electromagnetic Compatibility Directive 2014/35/EU Low Voltage Directive
CE mark	Yes
Warranty	5 years

Electrical Data

Input Power	36 W
Input voltage	220-240V
Input Frequency	50-60 Hz
Drive Current	350 mA
Power Factor	0.97

Mechanical Characteristics

Housing Material	Sheet steel 0,5mm
Surface Finish	White powder coating (RAL 9003)
Optical Cover	Opal PMMA

Initial Performance

Source Luminous Flux	5490 lm
Source Efficacy	170 lm/W
Initial Luminaire Luminous Flux	4172 lm
Initial Luminaire Efficacy	116 lm/W
Initial Corr. Colour Temperature (CCT)	4000 K
Initial Color Rendering Index (CRI)	>80 (Typ. 85)
Initial chromaticity	SDCM < 3

Logistics

Net weight per piece	4.04 kg
Gross weight per piece	4.61 kg
Volume	0.33 m ³
Packing	1 pc per carton

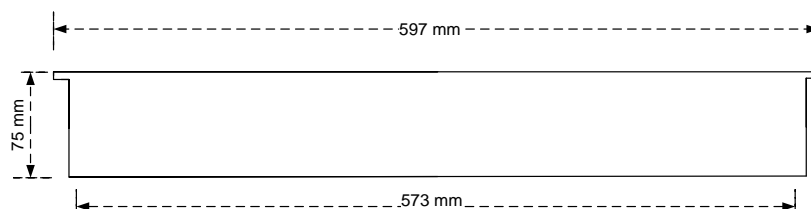
Over Time Performance

Driver Service Life Time	100,000 hrs
LED Median Useful Life L80B10	60,000 hours

Application Conditions

Operating Temperature Range	-20 to +40 °C
Average Ambient Temperature	+25 °C

Dimensional Drawing



ELMASCO INDUSTRIES S.A.

Head Office : 44 K. Palama, 14343 N. Chalkidona, Athens, Greece

Production Plant : Ag. Adrianos, 21100 Nafplio, Greece

Email: elmasco@elmasco.eu

Tel : +30 210 2583100

Fax: +30 210 2583107

